

Technical Meeting Notes



2026 UIAA Ice Climbing World Tour – Generic Notes

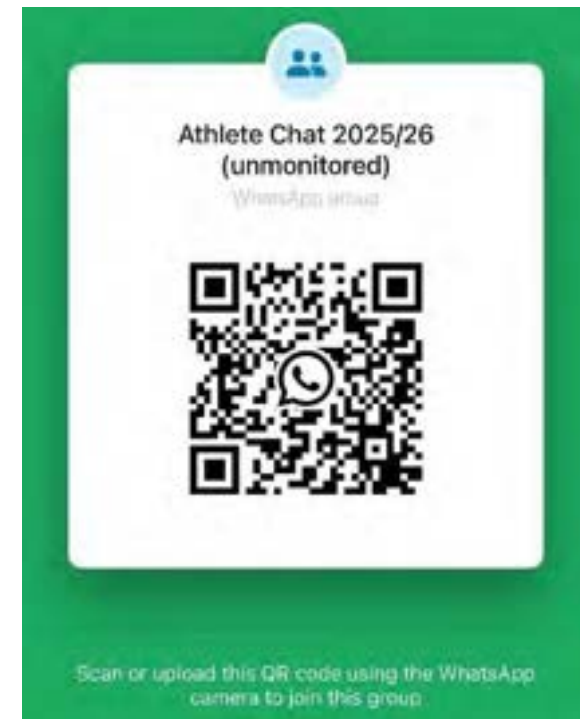
WhatsApp Communication for the season

For 2026 we will have WhatsApp groups for each of the world cup events for the athletes to receive relevant information throughout the weekend – so please scan the code below with your phones camera and join the group for the events you will be at.



WhatsApp Communication for the season

For 2026 we will have WhatsApp groups for each of the world cup events for the athletes to receive relevant information throughout the weekend – so please scan the code below with your phones camera and join the group for the events you will be at.



- ◆ Please check the updated rules for 2026
- ◆ [UIAA Ice Climbing Rules & Regulations \(2026\)](#)
- ◆ [2026 UIAA Ice Climbing Rules & Regulations](#)
– [Specific Changes](#)

UIAA Rules Update 2025-26

2.8. TEAM CLOTHING AND EQUIPMENT

2.8.2. Team Uniform: Athletes and team officials shall wear an appropriate uniform with visible country information that they represent. Country information may contain the full name of the country or the IOC country code. The same team uniform is recommended for athletes and team officials.

b) BIB numbers: As supplied by the competition **organizer or UIAA**. These BIB numbers (paper/vest), which each athlete must wear, must not be cut or otherwise modified and must carry the official identifying number of the athlete. **BIB numbers shall be visible for judges to read. It shall be on the back above the harness.**



Athletes are also required to wear helmets when climbing on the warm-up wall.

Technical - Difficulty Discipline

8.6. ISOLATION ZONE (SEMIFINAL AND FINAL)

8.6.8. Information that can or cannot be communicated to the athlete during climbing in a round where Isolation Rules are applied (semifinal or final):

- a) Giving information to the athletes about the route or previous attempts of other athletes is not allowed.
- b) Shouting the time and cheering them on is allowed.

8.8.10. Each athlete shall be ready to leave the Transit Zone and enter the arena, **facing away from the wall**, when instructed to do so.

8.8.11. If it is not possible to tie in the knot and finish preparations in the Transit Zone for a round with Isolation Rules, athletes must do so in the climbing area **facing away from the wall**.

8.8.12. Once the athlete is fully prepared (knot tied, fully clothed), **they will be allowed 30 seconds to review the route** and start climbing. The judge will inform the athlete, "Your preparation time starts now," and then the athlete can face the wall.

8.8.14. If the athlete does not start climbing by the end of the **30-second preparation period**, the judge will ask the athlete, "Please start climbing immediately," and the athlete must start their attempt without any delay.



8.9.5. Each route will have a pre-determined limited time set by the Head International Route Setter, during which an athlete may attempt the route. **The minimal and maximal time allocation per competition round is summarized in the following table:**

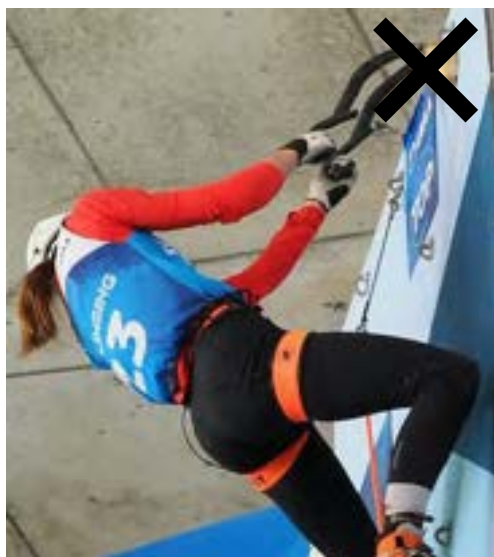
Round	Time Limit
Qualification	3:30 – 5 minutes
Semifinal	5 – 8 minutes
Final	5 – 8 minutes



Technical Lead discipline – Scoring update changes

8.9.6. During the attempt on a route:

- a) The last clipping position for each quickdraw is the last hold/zone from which it is possible to clip that quickdraw. If a clip is passed or skipped, then the Route Setter will determine the last clipping position.
- b) An athlete **may climb back at any point during their attempt** on a route as long as they do not return to the ground.
- c) If the athlete does a move from the **Mandatory Clipping Hold** to the next holds without clipping the relevant quickdraw, their attempt will be terminated at the Mandatory Clipping Hold, and the final score will be the score of the Mandatory Clipping Hold.
- d) For safety reasons, **athletes shall not use a mantle move on the Ice Axe** (pressing down on the ice axe in undercling stein position to push the body upward – [an explanatory video can be seen here](#)) during their attempt. Any use of a mantle will result in the immediate termination of the attempt.



8.9.7. Termination of an attempt: An attempt will be considered successful if the athlete:

- a) Climbs the route in accordance with 8.9.6.
- b) On lead:
 - i. **Clips the last quickdraw (marked in a blue square) within the permitted time.**



8.9.8. Termination of an attempt: An attempt will be considered unsuccessful if the athlete:

a) Uses any Illegal Aid, which is defined by the following:

i. Ice axe:

E. Using ice axes with any parts of the body other than hands.

iii. Any part of the body or gear:

A. Using any areas beyond the Climbing Surface.

B. Using or touching any part of the wall surface beyond the marked boundaries of the route. Using or touching the actual red zone boundary line is OK ([an explanatory video can be seen here](#)).

8.12.3. A Technical Incident shall be dealt with as follows:

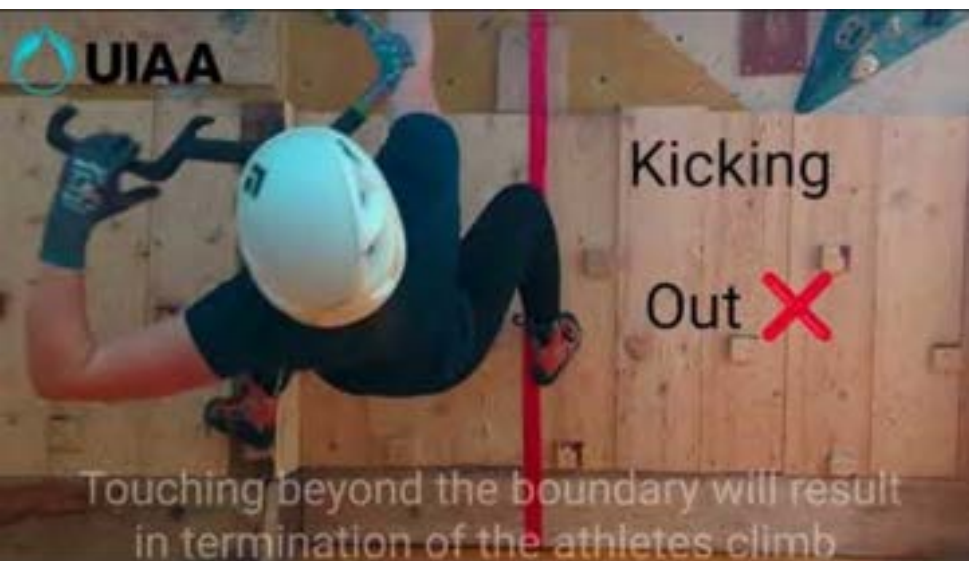
b). The minimum resting time shall be at least 1 minute per hold/zone climbed before the Technical Incident and up to 20 minutes between attempts on the route, while the Jury President has the decisive power over the exact allotted time.

8.12.4. If a technical incident results in a hold being replaced:

a) In case the new hold is the same, no action is required.

b) In case the new hold is different and does not change the difficulty of the move, the round shall continue, and all the subsequent athletes must be informed by the Category Judge before their attempt which hold has changed.

c) In case a hold of the same difficulty is not available, the Jury President shall decide whether the route or round shall be rerun or cancelled.



ATTENTION – RULES VIDEO EXPLANATIONS

HEIGHT MEASUREMENT RULES – EXPLAINED

DYNAMIC MOVEMENT SCORING RULES – EXPLAINED

RED BOUNDARY RULES – EXPLAINED

SPECIFIC CASE RULES – EXPLAINED



Athlete must present to the Route...

- Fully Equipped (Harness, Axes, Crampons)
- All Body Covered
 - Gloves
 - Helmet
 - Bib number
- Equipment Respects the Rules

LEAD

- Start Points are marked **BLUE**;
- Time Starts when you move **one** Ice Axe from Starting Point;
- TOP is reached when **all** quickdraws are clipped in sequence ~~(incl. the last) and Ice Axes are both in the Finish point (BLUE).~~

LEAD



LEAD

UIAA ICE CLIMBING WORLD CUP



LEAD

UIAA ICE CLIMBING WORLD CUP



NOT ALLOWED



LEAD

UIAA ICE CLIMBING WORLD CUP



LEAD



NOT ALLOWED



LEAD



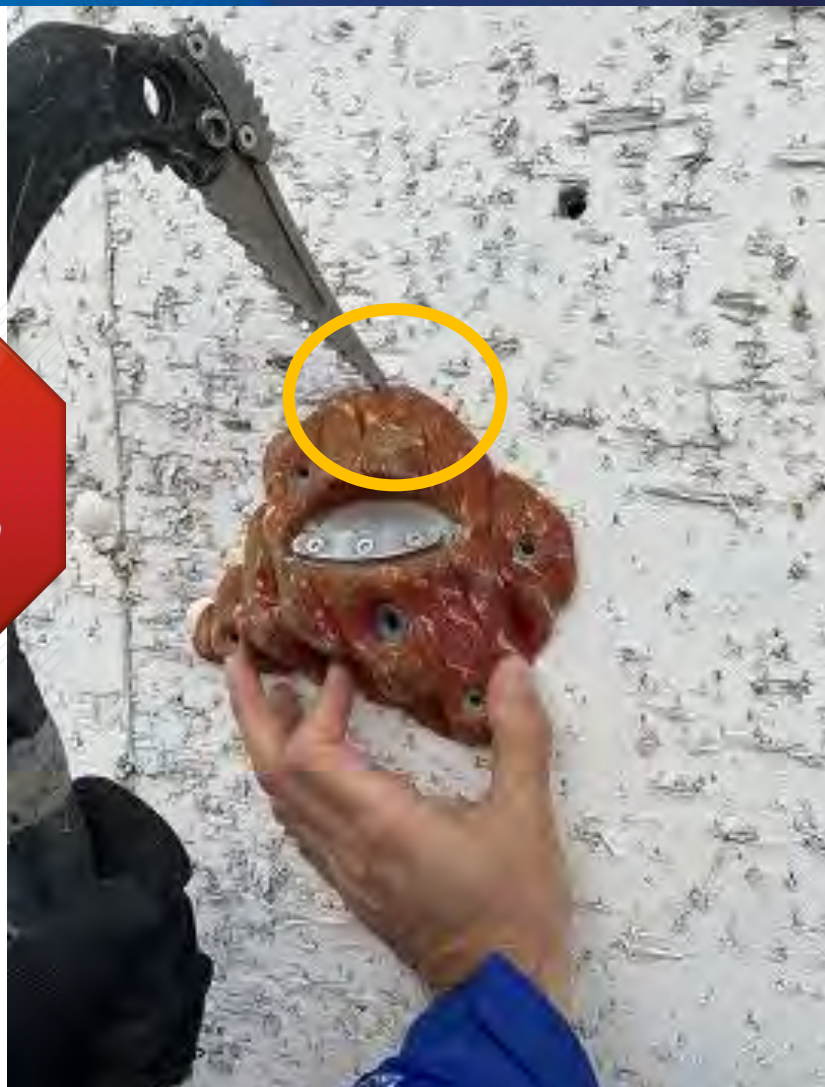
**Allowed
On The
Hold**

LEAD



Allowed

LEAD



**NOT ALLOWED
BEHIND THE
HOLD**

LEAD



LEAD



LEAD

Allowed



LEAD



NOT ALLOWED

LEAD



LEAD



ALLOWED

LEAD

NOT ALLOWED



LEAD

UIAA ICE CLIMBING WORLD CUP



Athletes are required to wear helmets when climbing on the warm-up wall.

ISOLATION

Route Observation

- Helmets are obligatory;
- No climbing;
- Touching the holds or trying the ice without leaving the ground is permitted;
- Climbers may use binoculars or draw a sketch
- 8 mins for all route observations



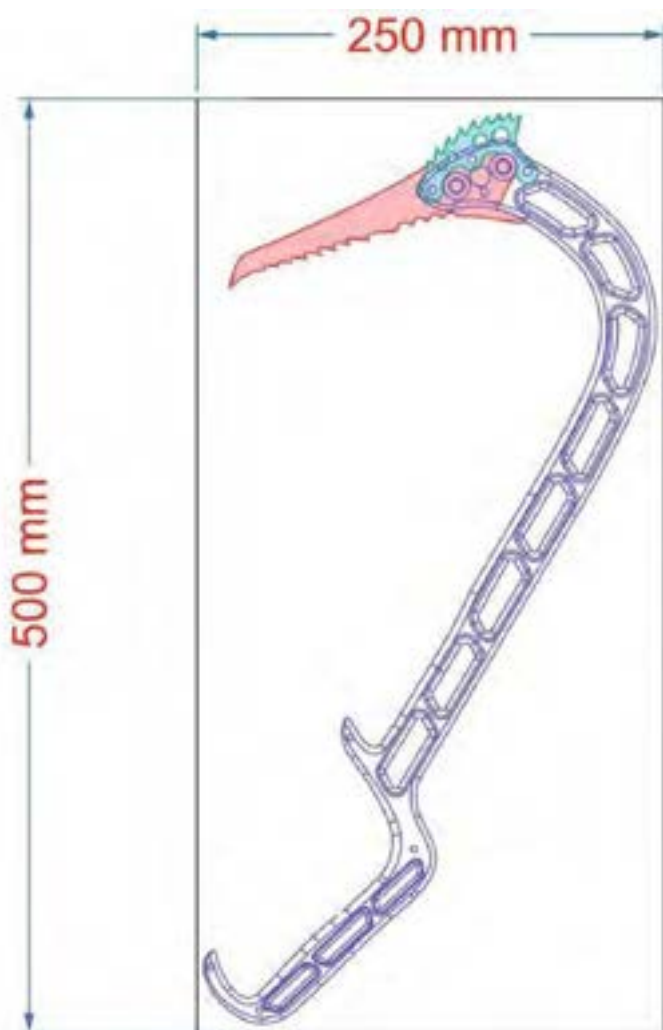
LEAD

ATTENTION

Technical Incidents: Athlete must decide immediately whether to restart or rest → Jury President will decide resting time (to benefit the athlete).

LEAD

- Any appeals must be submitted to the President of the Jury **within 10 minutes** of publication of the provisional results and must be accompanied by a deposit of 50 EUR which will be refunded if the appeal is accepted. [Appeals must be written in English using this form](#)



ATTENTION



All Tools should fit inside the box and the handle and head of the axe should touch the bottom of the box, and when it does so, no part of the axe should protrude above the top of the box which has a depth of 6cm.

Note – speed axes with protection for the hands are allowed to be outside the box dimensions – but only for the protection part – the axe itself must still fit in the box.

GENERIC

- There are NO false starts in the SINGLE or DUEL speed competition. However, all competitors must leave the pad within 3 seconds of the audible sound from the timing system. If a competitor does not leave the pad within 3 seconds their attempt will be marked as a 'Did Not Start – DNS'.
- **45 Seconds Maximum climbing time** (speed)

APPEALS

Technical incident – IMMEDIATELY!

Speed Duel Finals – IMMEDIATELY!

Speed Qualifications – **10 minutes** after results have been published

SPEED

A low-poly illustration of a climber in a red jacket and blue pants standing on a dark, jagged rock peak. The climber is holding a rope. In the background, there are more mountain peaks under a sky with a large, bright sun or moon, creating a warm, orange glow. The sky is filled with stylized, low-poly clouds in shades of blue and white.

Thank you



UIAA

International Climbing and Mountaineering Federation
UNION INTERNATIONALE DES ASSOCIATIONS D'ALPINISME